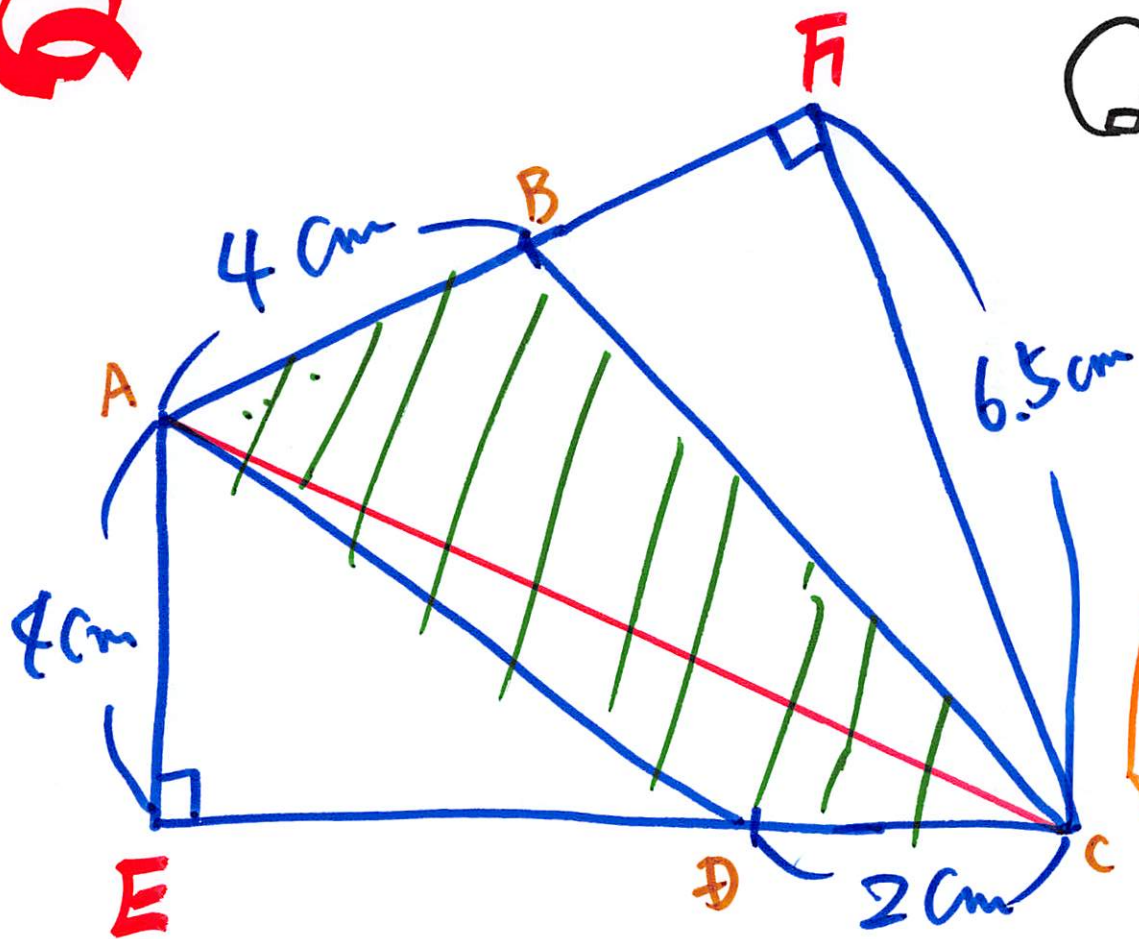


参考 Q

Q: $\square ABCD$ の面積



解:

3 角形に区切

$$\text{面積} = \text{底辺} \times \text{高さ} \div 2$$

AC を 3K.

$$\textcircled{1} \triangle AEC \Rightarrow 2 \times 4 \div 2 = 4$$

$$\textcircled{2} \triangle AFC \Rightarrow \frac{4 \times 6.5}{2} = 13$$

} 17

27/2.22